

Ticketing & Loyalty Management Solutions





NeoTech Identity Solutions Pvt. Ltd.

About Us

- NeoTechID is a provider of **Business Automation Solutions** based on AIDC technologies such as RFID, bar-code scanning, biometrics, NFC and smart cards.
- NeoTechID was founded in 2009 with a **Vision** of filling the void between the limited capabilities of hardware resellers and the client's requirement of a total solution approach to their needs.
- We offer **Operations Visibility** and **Process Optimization** through innovative use of AIDC technologies to track various assets, integration of AIDC devices with back-end systems and in-house consulting, to maximize business gains
- We aim to become the most preferred and trusted partner for such solutions by providing **Innovative, Reliable** and the most **Cost-effective Solutions** based on latest technologies that will result in better ROI for our clients

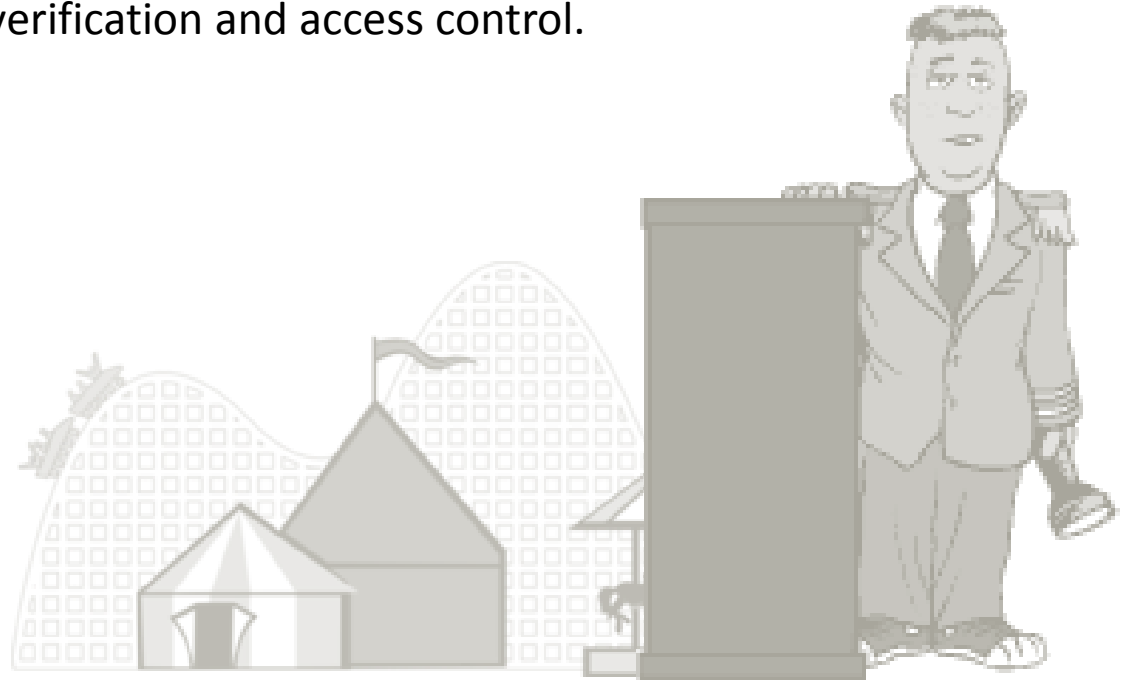


Application and Industry Focus

Industry	Solution
 Jewellery	<ul style="list-style-type: none">• RFID based Automated Stock Counting / Verification Solutions with integration to exiting POS applications / ERP systems
 Manufacturing	<ul style="list-style-type: none">• Warehouse automation and mobility solutions with integration to SAP
 Corporate Offices	<ul style="list-style-type: none">• Fixed Asset Management & Tracking• Laptop / Employee Movement Tracking• IP-surveillance, Access Control
 Custom Applications	<ul style="list-style-type: none">• School Bus and Students Tracking• Event Delegate Management• Laundry Management etc.

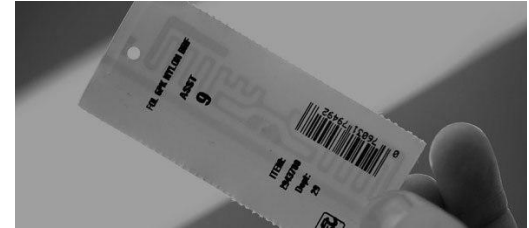
Need for Ticket Authentication

- Entry to entertainment center's such as theme parks, cinema halls, art galleries, museums, nature parks, sports venues etc. is typically fee based and requires validation of tickets/passes at the entry point.
- Most venues issue printed paper tickets and employ several personnel for the mundane task of ticket verification and access control.



Solution Overview: Access Control

- Patrons are issued tickets with barcodes printed on them and/or RFID chips embedded inside
- A flap barrier or turnstile placed at every entry/exit point is fitted with Barcode /RFID scanners based on the type of ticket issued
- To enter the premise the patron must present his RFID or barcode ticket to the scanner. The turnstiles/flap barriers are activated on detection of a valid ticket.
- This automated system eliminates the need for personnel to check the validity of tickets at entry. The system also ensures that a ticket is used for only a pre-determined number of times, in most cases only once.



Solution Overview: Loyalty Management

- Regular patrons can be given the option of paying upfront and buying a multiple entry Barcode or RFID ticket.
- Various schemes, discounts, promotional offers may be extended to such loyalty card holders.
- A loyalty card holder is not be required to stand in queue to purchase a ticket each time. He may simply enter the premise by presenting his loyalty card to the scanner at the turnstile.
- Once the number of entries activated against the loyalty card have been consumed, the patron can get additional entries activated against the same card through a card recharge option.



Key Benefits

- Ensures that only one person enters against one ticket. No tailgating or ticket reuse
- Ensures that a person enters only that section for which he/she has bought a ticket
- Allows the management to get deeper insight into sales by giving a breakdown of how many tickets were scanned for a particular attraction
- Automated reports for analyzing daily/weekly/monthly trends and patterns help plan for better venue management
- The application can also be extended to include loyalty passes and pre-paid cards, thereby providing commercial incentives to the patrons and eliminating the need to dispense new tickets for each visit.

Our Value Proposition

- **Expertise in RFID** and practical experience gained through our projects.
- **Knowledge Centers** made up of our IT engineers, advanced equipment, and consultants are able to derive the best solutions for our clients.
- **Support Infrastructure** comprising of software and hardware channel partners help achieve client satisfaction every single time.
- **Focus** on consistently meeting the expectations of our customers and more. We do our level best to offer you a solution that not only meets your requirements but is also cost effective.



Partners



MOTOROLA

MICROSCAN®



SMARTRAC ((•))

Thank You

Rohit Karnik

Managing Director

NeoTechID

E: rohit.karnik@neotechid.com

M: +91 95455 52102

Nikhil Kanitkar

Director – Sales

NeoTechID

E: nikhil.kanitkar@neotechid.com

M: +91 93722 19100